



All technical details in this catalog are subject to change by Liyu

DESIGN
NEW
VISION

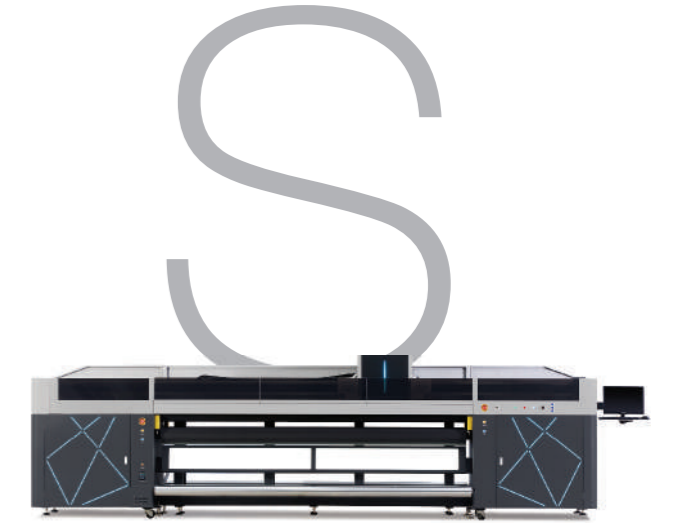
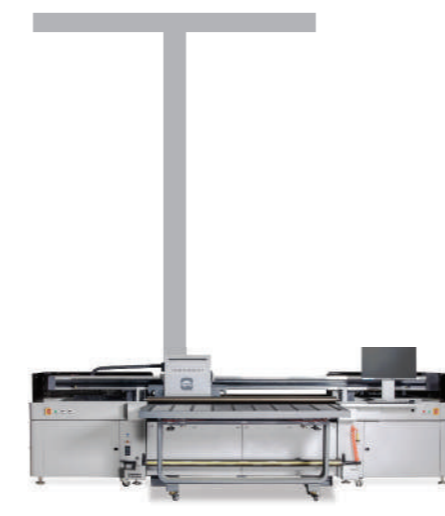
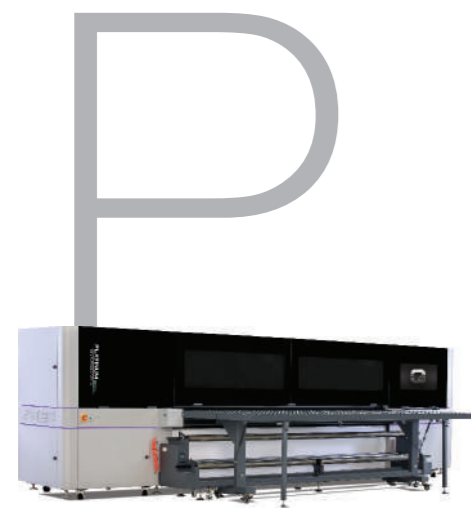
PLATINUM SERIES



Liyu Company is found in the year 1993 and one of the first Chinese manufacturer of cutting plotters. In 2004 Liyu produced it's first large format printer and entered to the market. Today Liyu produces more than 1.200 large format printers yearly.Liyu International is formed to promote Liyu printers in high-end markets with Platinum Series. Today Liyu International organises all distributors in most of the European countries,north Africa and middle east. Distributors present the excellent aftersales and technicalsupport for Liyu brand in their own market.

The showrooms in Turkey / Ankara, Italy / Milano, UK /Liverpool, France/ Strasbourg and Spain / Madrid play key role to demonstrate Liyu products to quality aware customers. This year Liyu International opens his Germany office to serve European dealers and customers.





PLATINUM Q2 HYBRID

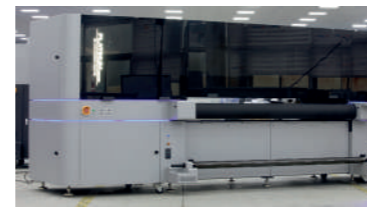


DESIGN
NEW
VISION

PLATINUM SERIES



RICOH | KONICA MINOLTA



Technical Specifications

Print Heads	Konica Minolta 1024i - Ricoh Gen5/Gen6
Printhead Quantity	16 (Max.)
Drop Volume	Konica 6 Pl. 13 Pl. / Gen5 - 7 Pl. / Gen6 - 5 Pl.
Color Scale	CMYK + White + Lc + Lm + Varnish
INK Type	UV - LED
Drying System	LED
Print Width	2050 mm
Print Height	50 mm
Print Resolution	Konica 2880 dpi / Gen5-6 2400 dpi
Printing Speed Up to	90 m2/h
Rip Software	PhotoPrint / Caldera (Opt.)
Hardware	LCD Monitor
Power Requirement	230v (+/-) 10% 40A / 60HZ
Machine Size (With Table)	3200 mm x 5000 mm x 1850 mm
Machine Weight	2400 kg.

PLATINUM Q3 HYBRID



DESIGN
NEW
VISION

PLATINUM SERIES



RICOH | KONICA MINOLTA



Technical Specifications

Print Heads	Konica Minolta 1024i - Ricoh Gen5/Gen6
Printhead Quantity	16 (Max.)
Drop Volume	Konica 6 Pl. 13 Pl. / Gen5 - 7 Pl. / Gen6 - 5 Pl.
Color Scale	CMYK + White + Lc + Lm + Varnish
INK Type	UV - LED
Drying System	LED
Print Width	3300 mm
Print Height	50 mm
Print Resolution	Konica 2880 dpi / Gen5-6 2400 dpi
Printing Speed Up to	120 m2/h
Rip Software	PhotoPrint / Caldera (Opt.)
Hardware	LCD Monitor
Power Requirement	230v (+/-) 10% 40A / 50HZ
Machine Size (With Table)	6020 mm x 3732 mm x 1775 mm
Machine Weight	3500 kg.

PLATINUM KC^{UV FLAT}

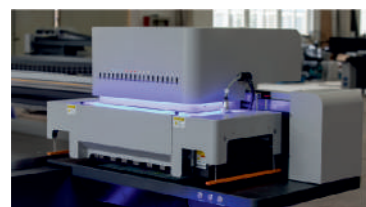


DESIGN
NEW
VISION

PLATINUM SERIES



RICOH | KONICA MINOLTA



Technical Specifications

Print Heads	Konica Minolta 1024i - Ricoh Gen5/Gen6
Printhead Quantity	16 (Max.) - 14 (Max.)
Drop Volume	Konica 6 Pl. / 13 Pl. / Gen5 - 7 Pl. / Gen6 - 5 Pl.
Color Scale	CMYK + White + Lc + Lm + Varnish
INK Type	UV - LED
Drying System	LED
Table Size	2500 mm x 1250 mm / 3050 mm x 2050 mm
Print Height	100 mm
Print Resolution	Konica 2880 dpi / Gen5-6 2400 dpi
Printing Speed Up to	120 m ² /h
Rip Software	PhotoPrint / Caldera (Opt.)
Power Requirement	230v (+/-) 10% 40A / 50HZ
Machine Size 2512	2200 mm x 5220 mm x 1530 mm
Machine Size 3020	3000 mm x 5800 mm x 1530 mm
Machine Weight	1370 - 2500 kg.

PLATINUM KCXL^{UV FLAT}



DESIGN
NEW
VISION

PLATINUM SERIES



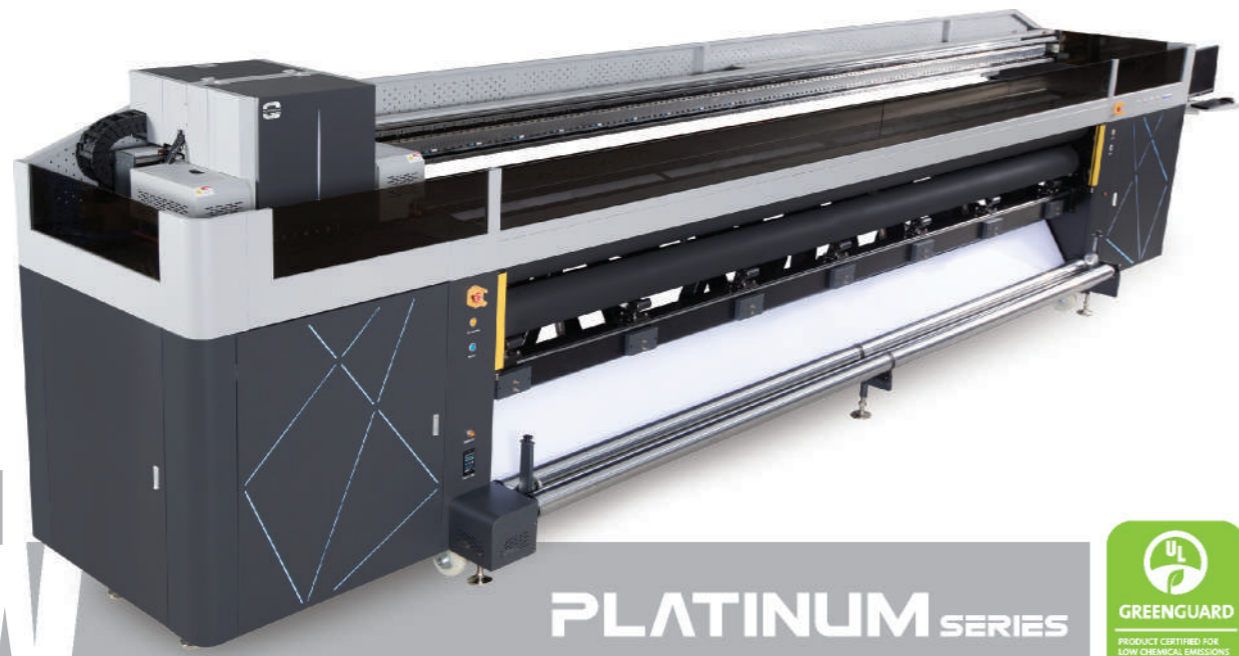
RICOH | KONICA MINOLTA



Technical Specifications

Print Heads	Konica Minolta 1024i - Ricoh Gen5 - Ricoh Gen6
Printhead Quantity	16 (Max.)
Drop Volume	Konica 13 Pl. / Gen5 - 7 Pl. / Gen6 - 5 Pl.
Color Scale	CMYK + White + Lc + Lm + Varnish
INK Type	UV - LED
Drying System	LED
Table Size	2500 mm x 1250 mm / 3050 mm x 2050 mm
Print Height	100 mm
Print Resolution	Konica 2880 dpi / Gen5-6 2400 dpi
Printing Speed Up to	180 m ² /h
Rip Software	PhotoPrint / Caldera (Opt.)
Power Requirement	230v (+/-) 10% 40A / 50HZ
Machine Size 2512	2200 mm x 5220 mm x 1530 mm
Machine Size 3020	3000 mm x 5800 mm x 1530 mm
Machine Weight	1370 - 2500 kg.

PLATINUM **QR** UV ROLL

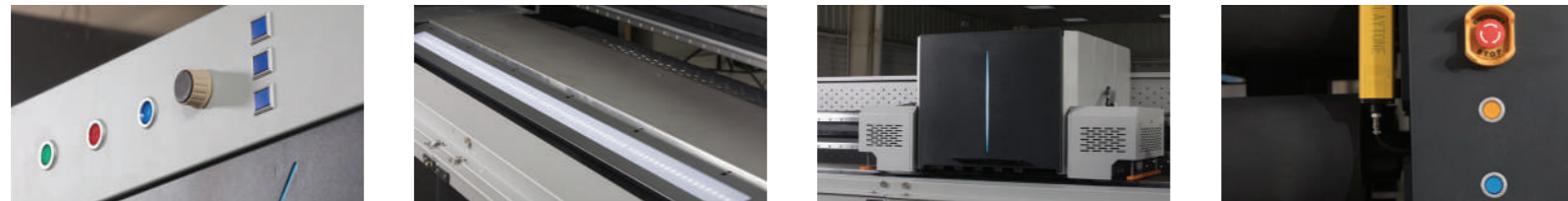


DESIGN
NEW
VISION

PLATINUM SERIES



KONICA MINOLTA



Technical Specifications

Print Heads	Konica Minolta 1024i
Printhead Quantity	16 (Max.)
Drop Volume	6 Pl. 13 Pl.
Color Scale	CMYK + White + Lc + Lm + Varnish
INK Type	UV - LED
Drying System	LED
Print Width	3300 mm - 5300 mm
Print Table Width	3400 mm - 5400 mm
Print Resolution	2880 dpi
Printing Speed Up to	120 m2/h - 145 m2/h
Rip Software	PhotoPrint / Caldera (Opt.)
Printing Interface	PCIe System
Power Requirement	230v (+/-) 10% 40A / 50HZ - 230v (+/-) 10% 40A / 50HZx2
Machine Size	6412 mm x 1620 mm x 2100 mm / 8700 mm x 1620 mm x1971
Machine Weight	2800 kg. - 5500 kg.

PLATINUM **PCT** UV ROLL

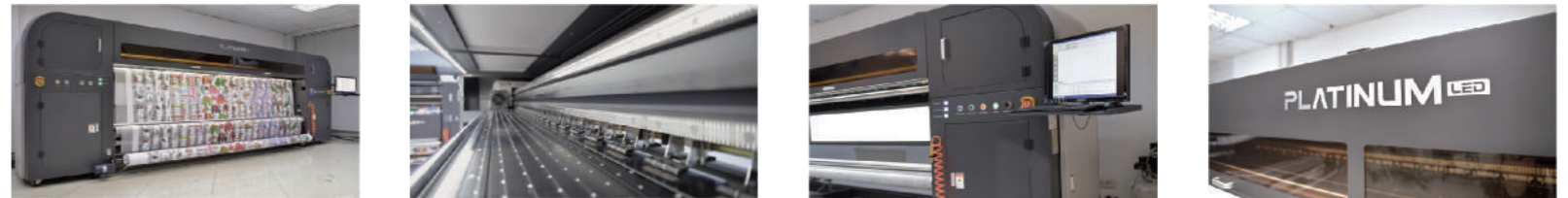


DESIGN
NEW
VISION

PLATINUM SERIES



RICOH | KONICA MINOLTA



Technical Specifications

Print Heads	Konica Minolta 1024i - Ricoh Gen5/Gen6
Printhead Quantity	14 (Max.) - 8 (Max.)
Drop Volume	Konica 6 Pl. 13 Pl. / Gen5 - 7 Pl. / Gen6 - 5 Pl.
Color Scale	CMYK + White + Lc + Lm
INK Type	UV - LED
Drying System	LED
Print Width	3200 mm
Print Resolution	Konica 2880 dpi / Gen5-6 2400 dpi
Printing Speed Up to	95 m2/h
Rip Software	PhotoPrint / Caldera (Opt.)
Printing Interface	-
Power Requirement	230v (+/-) 10% 22A / 50HZ
Machine Size	1150 mm x 5400 mm x 1650 mm
Machine Weight	1450 kg.

PLATINUM EQ2 HYBRID

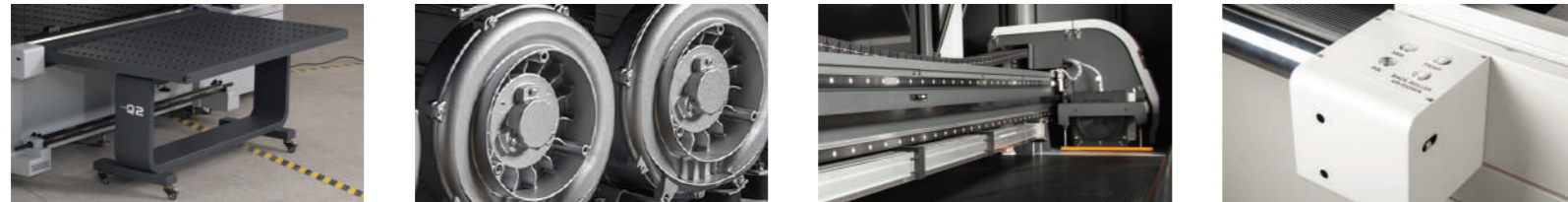


DESIGN
NEW
VISION

PLATINUM SERIES



RICOH | KONICA MINOLTA



Technical Specifications

Print Heads	Konica Minolta 1024i - Ricoh Gen5/Gen6
Printhead Quantity	16 (Max.)
Drop Volume	Konica 6 Pl. / 13 Pl. / Gen5 - 7 Pl. / Gen6 - 5 Pl.
Color Scale	CMYK + White + Lc + Lm + Varnish
INK Type	UV - LED
Drying System	LED
Print Width	2050 mm
Print Height	50 mm
Print Resolution	Konica 2880 dpi / Gen5-6 2400 dpi
Printing Speed Up to	90 m2/h
Rip Software	PhotoPrint / Caldera (Opt.)
Hardware	-
Power Requirement	230v (+/-) 10% 40A / 50HZ / 60HZ
Machine Size (With Table)	3200 mm x 5000 mm x 1850 mm
Machine Weight	2400 kg.

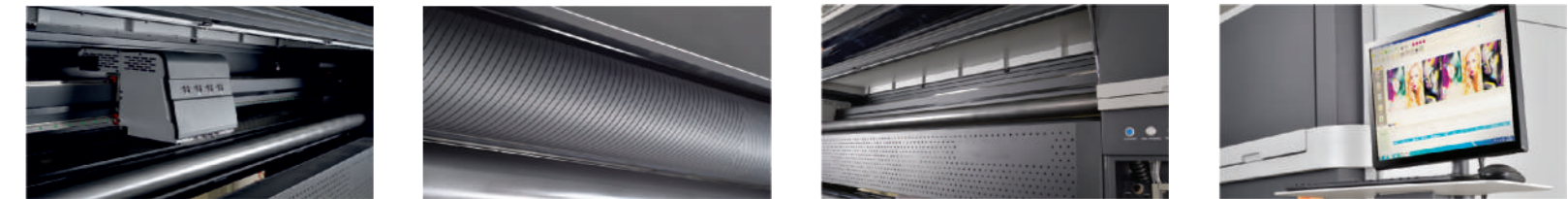
PLATINUM FH TEXTILE



DESIGN
NEW
VISION

PLATINUM SERIES

KYOCERA | KONICA MINOLTA



Technical Specifications

Print Heads	Konica Minolta 1024i - Kyocera
Printhead Quantity	12 (Max.) - 4 (Max.)
Drop Volume	Konica 13 Pl. / Kyocera 3,5 Pl.
Color Scale	CMYK + Lc + Lm / CMYK
INK Type	Sublimation / Reactive / Pigment
Drying System	Halogen - Fan
Print Width	3200 mm
Print Resolution	2880 dpi
Printing Speed Up to	200 m2/h
Rip Software	PhotoPrint
Printing Interface	PCIe System
Hardware	Fikse Ünitesi 3200 mm
Power Requirement	230v (+/-) 10% 32A / 50HZ
Machine Size (With FikseUnit)	3000 mm x 5200 mm x 2000 mm
Machine Weight	2900 kg.

PLATINUM PCT SOLVENT



DESIGN
NEW
VISION

PLATINUM SERIES



Technical Specifications

Print Heads	Konica Minolta 1024i
Printhead Quantity	12 (Max)
Drop Volume	13 Pl.
Color Scale	CMYK + Lc + Lm
INK Type	Eco Solvent
Drying System	Halogen - Heater - Fan
Print Width	3200 mm
Print Resolution	2880 dpi
Printing Speed Up to	220 m2/h
Rip Software	PhotoPrint - Caldera (Opt.)
Printing Interface	PCIe System
Hardware	-
Power Requirement	230v (+/-) 10% 22A / 50HZ
Machine Size	1150 mm x 5400 mm x 1650 mm
Machine Weight	1450 kg.

PLATINUM PZN SOLVENT



DESIGN
NEW
VISION

PLATINUM SERIES



Technical Specifications

Print Heads	Konica Minolta 1024i - Konica Minolta 512i
Printhead Quantity	8 (Max)
Drop Volume	13 Pl. - 30 Pl.
Color Scale	CMYK
INK Type	Eco Solvent
Drying System	Halogen - Heater - Fan
Print Width	3200 mm
Print Resolution	2880 dpi
Printing Speed Up to	70 m2/h - 150 m2/h
Rip Software	PhotoPrint
Printing Interface	PCIe System
Hardware	-
Power Requirement	230v (+/-) 10% 10A / 50HZ
Machine Size	900 mm x 4600 mm x 1350 mm
Machine Weight	650 kg.



DESIGN
NEW
VISION

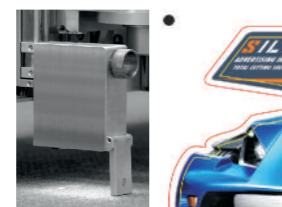
PLATINUM SERIES

Platinum Q-Cut digital cutting machine with high-precision digital cutting system supports cutting, area clearing, drilling and local cutting automatically. It is an ideal and fast solution for Processing advertising signs, printing and packaging, automotive interior, furniture, composite etc materials with the automatic feeding and collecting system. It has high precision cutting table, fixed working environment, vacuum Pump 7.5KWA with 6 zone control system, electric Motor, rail, cutting carpet, two cutting heads, safety device, user safety and cutting tool automatic adjustment system

Technical details

Machine Type	Q-Cut 3532 - 3521 - 2532 - 2516 - 1516 - 1510
Table Size	3500mm x 3200mm - 3500mm x 2100mm - 2500mm x 3200 mm 2500mm x 1600mm - 1500mm x 1600mm - 1500mm x 1000mm
Cutting Formats	PLT, DXF, HPGL, PDF, EPS
Cutting Precision	± 0.1mm
Cutting Tools	EOT, UCT, KissCUT, PEN, V-CUT, CNC
Media thickness	45mm
Max. Cutting Speed	1500mm/s
Power (KW)	30 KW
Power Requirement	380v +/- 10% 50HZ

Technical details vary according to machine dimensions. For detailed information, please contact your sales representative.



Automatic Camera Positioning System

It is equipped with a high-sensitivity CCD camera, It performs automatic position on all kinds of materials. It prevents the problems caused by wrong material placement and print degradation that it targets to complete your work easily and accurately



High Efficiency Cutting Tools

The cutting speed can reach 1.5m/s, which is 4-6 times more than manual way. Intelligent control system of Z-Axis height and cutting tools reduces the range of motion, shortens the working time and thus increases production efficiency.



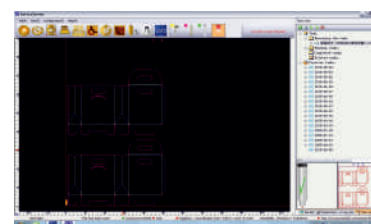
Safety Sensors

Safety Sensors Safety device equipped with laser automatic sensor device, provides a safe working environment. It is for user safety



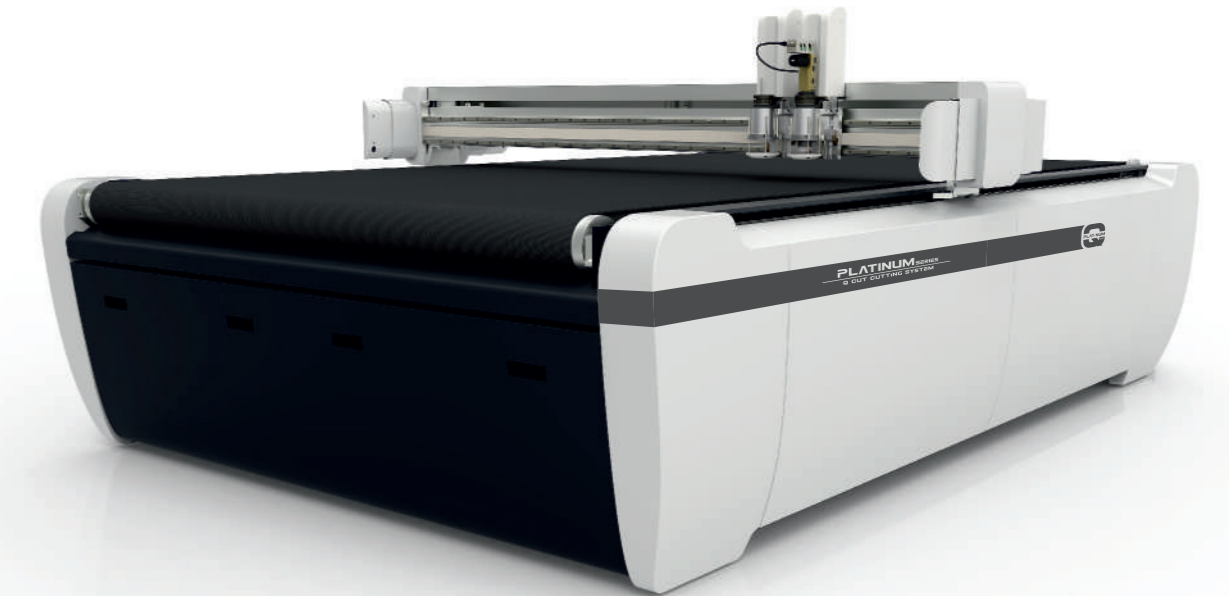
Excellent performance

Imported spindle with 350w or 1.8 kw power available. Rotation speed can be up to 60000rpm according to different materials application requirements, having a more smooth cutting edge.



Motion Control System

CUTTERVERVER, cutting and control is central, smooth cutting circles and Provides perfect cutting curves.



DESIGN
NEW
VISION

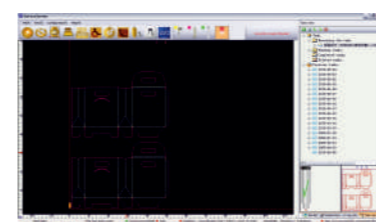
PLATINUM SERIES

Platinum Q-Cut digital cutting machine with high-precision digital cutting system supports cutting, area clearing, drilling and local cutting automatically. It is an ideal and fast solution for Processing advertising signs, printing and packaging, automotive interior, furniture, composite etc materials with the automatic feeding and collecting system. It has high precision cutting table, fixed working environment, vacuum Pump 7.5KWA with 6 zone control system, electric Motor, rail, cutting carpet, two cutting heads, safety device, user safety and cutting tool automatic adjustment system

Technical details

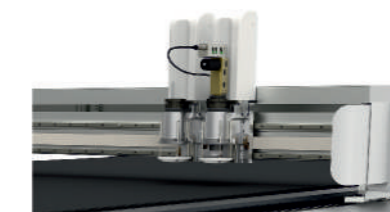
Machine Type	Q-Cut E series 2516
Table Size	2500mm x 1600mm
Machine Dimensions	3200mm x 2400mm
Machine Weight	900 kg.
Maximum Cutting Speed	1800mm/s
Media thickness	50mm
Cutting Precision	0.1mm
Cut File Formats	DXF / HPGL / ISO
Vacuum Power	7.5KW / 9KW
Power Requirement	220V / 50HZ - 380V/50HZ

Technical details vary according to machine dimensions. For detailed information, please contact your sales representative.



Motion Control System

CUTTERVERVER, cutting and control is central, smooth cutting circles and Provides perfect cutting curves.



Different industrial cutting requirements cutting head to meet standard head, drilling/grooving head and flexibly from the router head selectable

